



BARCUS STRUCTURAL
ENGINEERING

Producer's Dairy Cold Storage *Fresno, California*

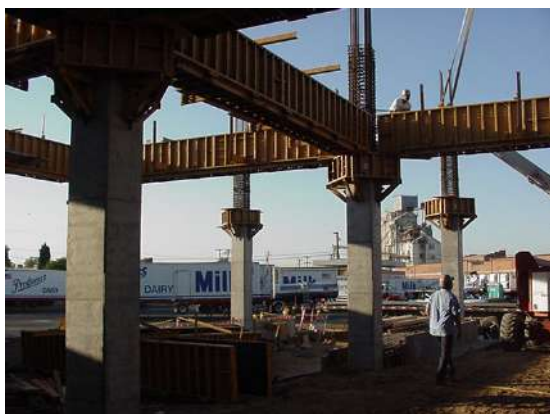


Client / Contact

Cazaly Consulting / Jeffrey A. Cazaly
2921 Larkin Avenue
Clovis, California 93612
(559) 291-1889

Description

Structural analysis and design of 38,500 sq. ft. refrigerated storage facility utilizing reinforced special concrete moment resistant frames (SMRF) over CIDH concrete pile foundations, with precast concrete plank decking. The project required a 43' ± tall externally connected stair access tower utilizing steel ordinary concentric braced frame (OCBF), as well as a roof-mounted steel special moment-resistant frame (SMRF) system for support of (2) 50,000 lb mechanical units.



7600 North Palm Avenue
Suite 200 / Fresno, CA 93711

office 559.261.8585

fax 559.261.8580

website www.BarcusInc.com